

CLERK'S RECORDING CERTIFICATE:

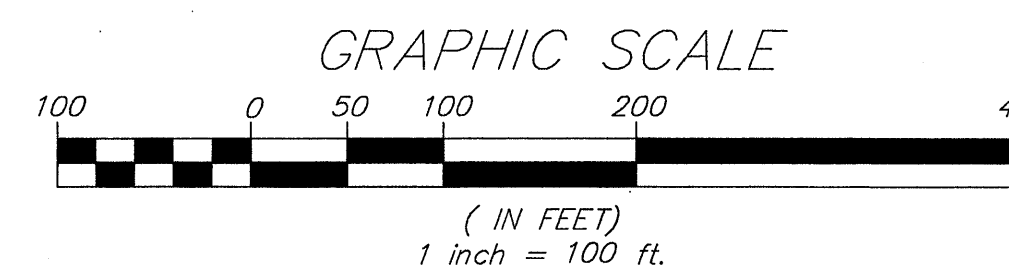
I, MARSHA STILLER, CLERK OF THE CIRCUIT COURT OF MARTIN COUNTY, FLORIDA, HEREBY CERTIFY THAT THIS PLAT WAS FILED FOR RECORD IN PLAT BOOK 15, PAGE 54, MARTIN COUNTY, FLORIDA, PUBLIC RECORDS, THIS 23 DAY OF FEBRUARY, 2003.

MARSHA STILLER, CLERK
CIRCUIT COURT
MARTIN COUNTY, FLORIDA

BY: DEPUTY CLERK (CIRCUIT COURT SEAL)

FILE NO.

SUBDIVISION PARCEL CONTROL NUMBER:



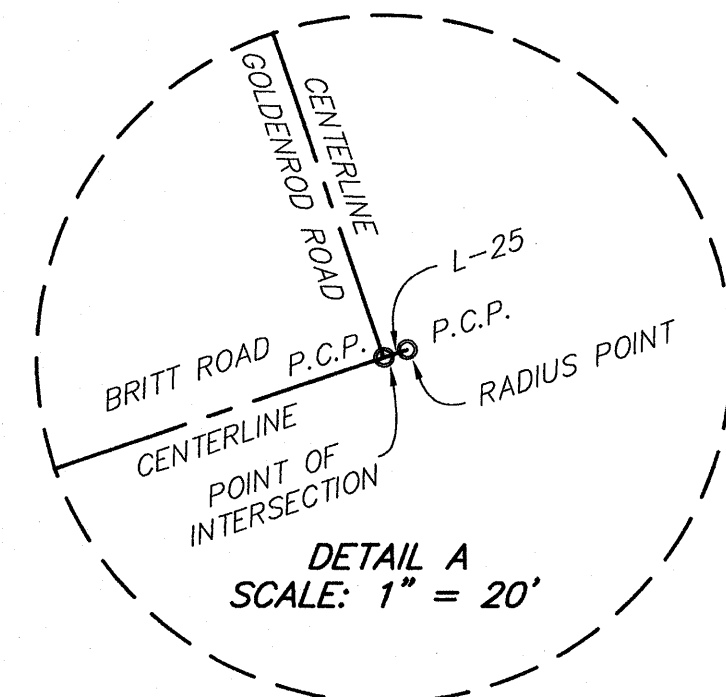
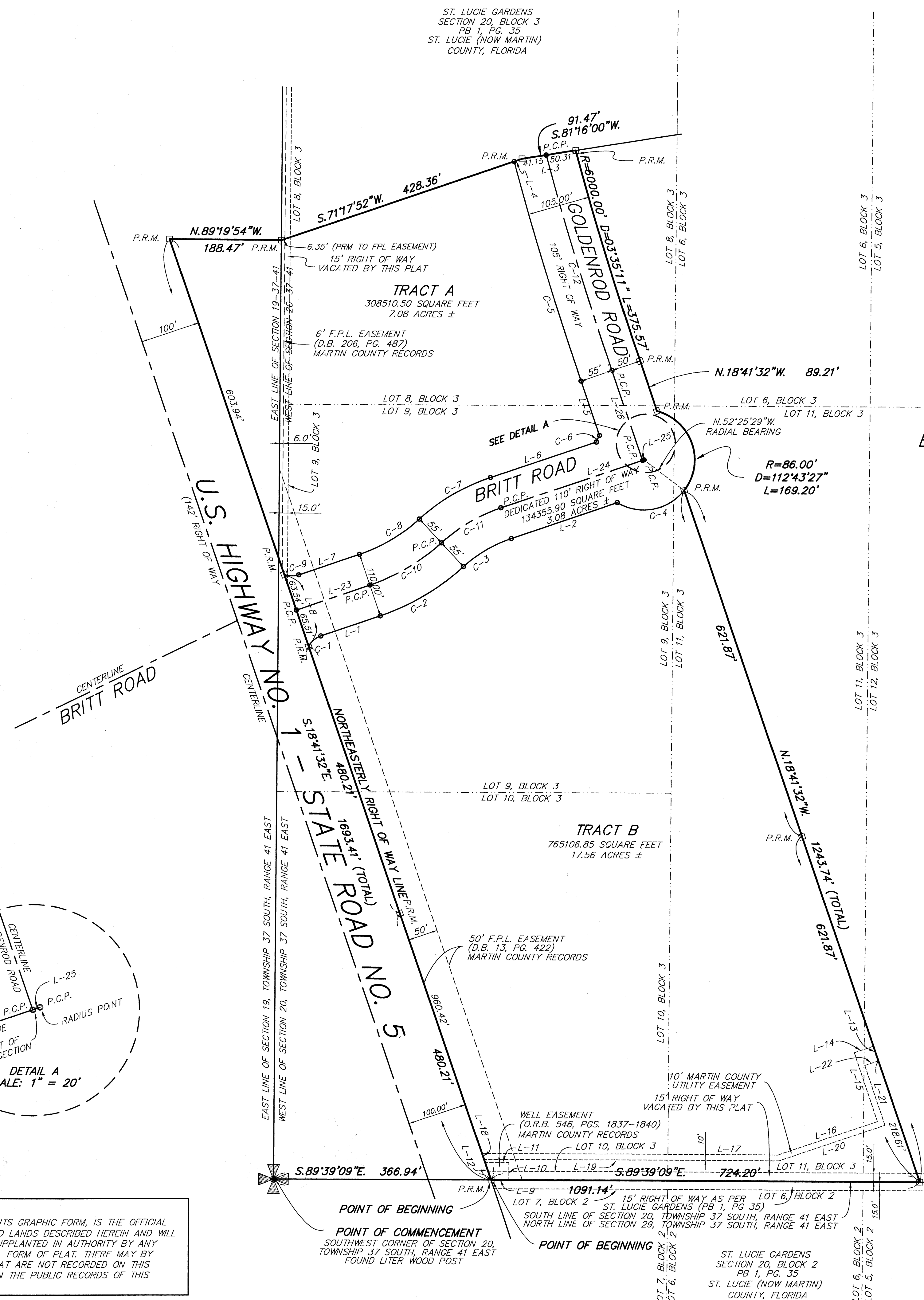
PINEAPPLE COMMONS COMMERCIAL TRACT

BEING A REPLAT OF A PORTION OF LOTS 8, 9, 10, 11 AND 12, BLOCK 3, SECTION 20, ST. LUCIE GARDENS, AS RECORDED IN PLAT BOOK 1, PAGE 35, PUBLIC RECORDS OF ST. LUCIE (NOW MARTIN) COUNTY, FLORIDA AND A PORTION OF SECTION 19 LYING IN SECTIONS 19 & 20, TOWNSHIP 37 SOUTH, RANGE 41 EAST CITY OF STUART, MARTIN COUNTY, FLORIDA

ACCURIGHT LAND SURVEYING, INC.

1501 DECKER AVENUE UNIT 419 - STUART, FLORIDA, 34994
OFFICE PHONE NO. (772) 286-7694 - FAX NO. (772) 220-7993

LAND SURVEYING - CONSULTANTS - LAND PLANNERS - DESIGNERS



- LEGEND AND ABBREVIATIONS:**
- P.R.M. = PERMANENT REFERENCE MONUMENT, SET 4"x4" CONCRETE MONUMENTS WITH DISC (PLS 4459)
 - P.C.P. = PERMANENT CONTROL POINT (SET PK & DISC PLS 4459) OR SET 5/8" IRON ROD & CAP (PLS 4459)
 - O.R.B. = OFFICIAL RECORDS BOOK
 - D.B. = DEED BOOK
 - PG(S) = PAGE(S)
 - F.P.L. = FLORIDA POWER & LIGHT
 - R = RADIUS
 - L = LENGTH
 - D = DELTA
 - PB = PLAT BOOK
 - PG = PAGE
 - PLS = PROFESSIONAL LAND SURVEYOR
 - DELINEATES ANGLE BREAK OR POINT OF CURVATURE
 - R/W = RIGHT OF WAY

LINE TABLE		
LINE #	BEARING	DISTANCE
L-1	N.71°18'28"E	105.76'
L-2	N.71°18'28"E	188.89'
L-3	S.81°16'00"W	91.47'
L-4	S.71°17'52"W	141.13'
L-5	S.18°41'32"E	96.95'
L-6	S.71°18'28"W	188.89'
L-7	S.71°18'28"W	107.84'
L-8	S.18°41'32"E	129.05'
L-9	S.89°39'09"E	30.00'
L-10	N.00°20'51"E	30.00'
L-11	N.89°39'09"W	40.35'
L-12	N.18°41'32"E	31.74'
L-13	N.18°41'32"W	26.47'
L-14	S.70°55'01"W	34.05'
L-15	S.18°25'44"E	123.59'
L-16	S.71°18'24"W	177.50'
L-17	N.89°39'06"W	500.02'
L-18	S.18°41'32"E	10.58'
L-19	S.89°39'06"E	498.24'
L-20	N.71°18'24"E	189.14'
L-21	N.18°25'44"W	107.36'
L-22	N.71°18'24"E	24.17'
L-23	N.71°18'28"E	130.76'
L-24	N.71°18'28"E	252.50'
L-25	N.71°18'28"E	2.50'
L-26	N.18°41'32"W	160.90'

CURVE TABLE			
CURVE #	RADIUS	LENGTH	DELTA
C-1	35.00'	27.85'	45°35'05"
C-2	395.00'	164.24'	23°49'26"
C-3	227.00'	94.39'	23°49'26"
C-4	86.00'	126.07'	83°59'31"
C-5	6105.00'	391.44'	03°40'25"
C-6	86.00'	12.43'	08°17'00"
C-7	337.00'	140.13'	23°49'26"
C-8	285.00'	118.50'	23°49'26"
C-9	35.00'	24.98'	40°53'49"
C-10	340.00'	141.37'	23°49'26"
C-11	282.00'	117.26'	23°49'26"
C-12	6050.00'	384.32'	03°38'23"

NOTICE:
THIS PLAT, AS RECORDED IN ITS GRAPHIC FORM, IS THE OFFICIAL DEPICTION OF THE SUBDIVIDED LANDS DESCRIBED HEREIN AND WILL IN NO CIRCUMSTANCES BE SUPPLANTED IN AUTHORITY BY ANY OTHER GRAPHICAL OR DIGITAL FORM OF PLAT. THERE MAY BE ADDITIONAL RESTRICTIONS THAT ARE NOT RECORDED ON THIS PLAT THAT MAY BE FOUND IN THE PUBLIC RECORDS OF THIS COUNTY.